

STEEL FRAMED HOMES & KITS

# FLINDERS

SEASIDE SERIES



## HOUSE FEATURES

- 4 BEDROOMS
- 2.5 BATHS
- 2 LIVING
- ALFRESCO

## HOUSE AREAS

LIVING:	199 m <sup>2</sup>
GARAGE:	N/A
TOTAL Sqm:	199 m <sup>2</sup>
TOTAL Sq's:	21 Sq

## ALSO AVAILABLE

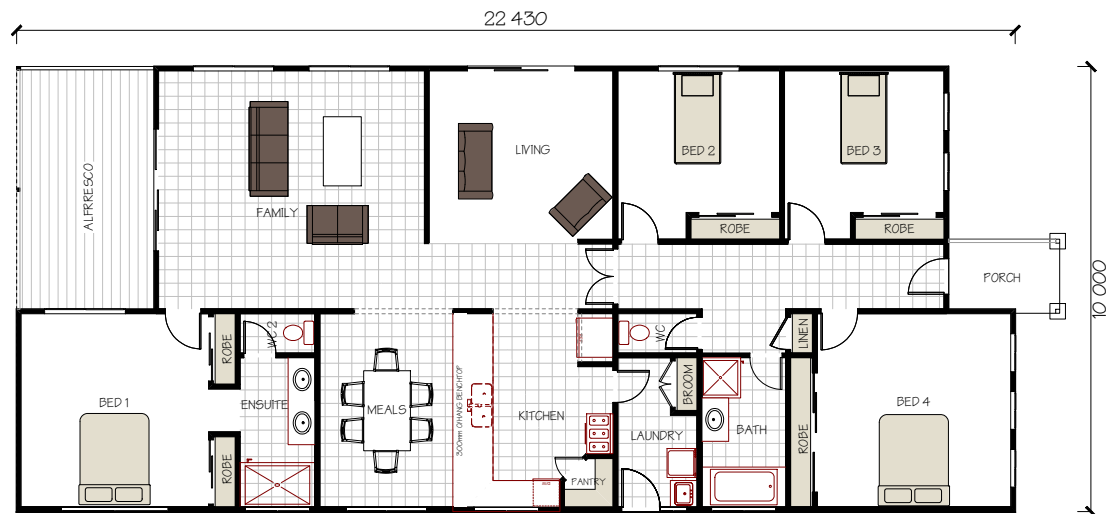
-

## CONTACT DETAILS

BluSteel Homes  
P.O. BOX 1250, SURREY HILLS  
NORTH  
VICTORIA, 3127

Ph: (03) 9890 0618  
FAX: (03) 9898 0600

Email: [info@blusteelhomes.com.au](mailto:info@blusteelhomes.com.au)  
[www.blusteelhomes.com.au](http://www.blusteelhomes.com.au)



## FLOOR PLAN